

TEAM TWISTED DAW9 MOJO

2016 Sponsorship Request



Who is Twisted Daw9 Mojo?

Team “Twisted Daw9 (dawg) MoJo” is an avid group of 4x4 Jeep/off-road enthusiasts that set out two seasons ago to support a couple friends and family members that have been diagnosed with Multiple Sclerosis. It is our way to show our support and help find a cure for this disease.

What is Multiple Sclerosis (“MS”)?

Multiple sclerosis, or MS, is a long-lasting disease that can affect your brain, spinal cord, and the optic nerves in your eyes. It can cause problems with vision, balance, muscle control, and other basic body functions.

The effects are often different for everyone who has the disease. Some people have mild symptoms and don’t need treatment. Others will have trouble getting around and doing daily tasks.

MS happens when your immune system attacks a fatty material called myelin, which wraps around your nerve fibers to protect them. Without this outer shell, your nerves become damaged. Scar tissue may form.

The damage means your brain can’t send signals through your body correctly. Your nerves also don’t work as they should to help you move and feel.

How Can I Help?

We are asking corporate “sponsors” to donate to the National MS Society, through our team. It’s a win-win for all of us – our team receives the credit for the donation, and the money goes directly to the National MS Society – and your company gets promoted as a supporter of the cause. Please note that ALL donations are payable directly to the National MS Society. It’s the way the payment is processed (via the team website, or via check) that gives our team credit.

What do I get for Sponsoring “Team Twisted Daw9 Mojo”?

Team Jersey Sponsorship:

Your company’s logo displayed on our team cycling jerseys for thousands to see.

Your logo will be featured on our team banner which will be displayed on each of our support vehicles

Facebook post recognition and thanking you for being a sponsor on our Team Page.

Your logo will appear on our personal team website.

TEAM TWISTED DAW9 MOJO

2016 Sponsorship Opportunities



YOUR LOGO ON THE TEAM JERSEY, EVENT BANNER, and TEAM WEBSITE!

\$2000+ Logo on team jersey SLEEVE, event banner, and team website

Left Sleeve (1 available) Right Sleeve (1 available)

\$1500+ Logo on team jersey SIDE PANEL, event banner, and team website

Left Side Panel (1 available) Right Side Panel (1 available)

\$1500+ Logo on team jersey UPPER BACK, event banner, and team website
(2 available)

\$1000+ Logo on team jersey FRONT CHEST, event banner, and team website
(1 available)

\$500+ Small/Medium Logo on team jersey, event banner, and team website

YOUR LOGO ON THE EVENT BANNER, and TEAM WEBSITE!

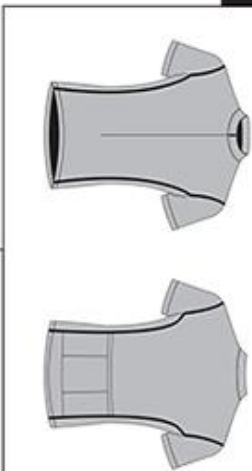
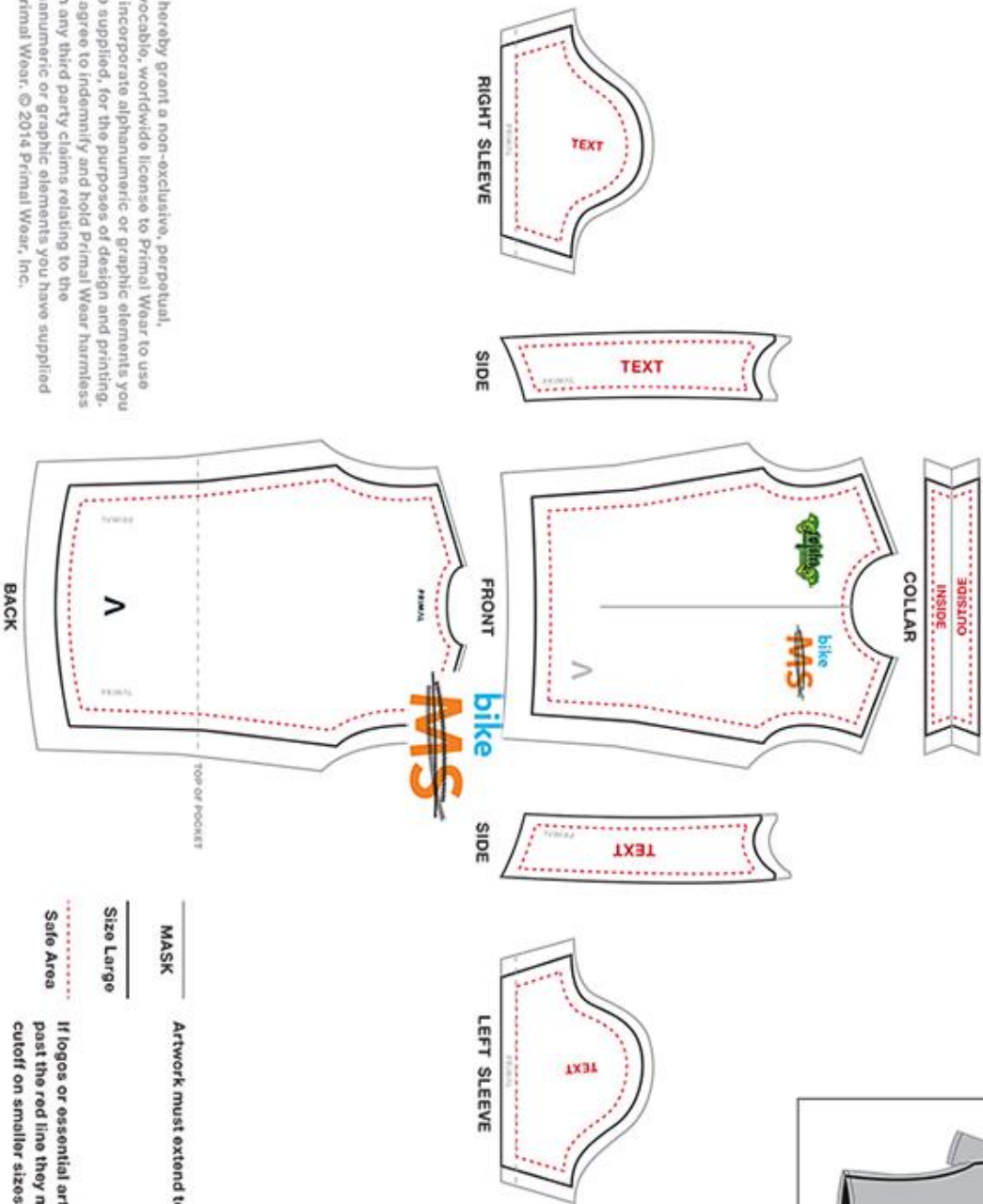
\$250+ Small/Medium Logo on event banner

WHAT WOULD YOU LIKE TO SEE FROM YOUR SPONSORSHIP?

Company:		<p>Make checks payable to: National Multiple Sclerosis Society</p> <p>Mail this form with check to: Joe Bouchard 6885 W. 91 Court #24107 Westminster, CO. 80021</p> <p>Email your logo in EPS or Vector format to: Joe.Bouchard@gmail.com</p>
Contact:		
Address:		
Phone:		
Email:		

Jersey Layout

You hereby grant a non-exclusive, perpetual, irrevocable, worldwide license to Primal Wear to use and incorporate alphanumeric or graphic elements you have supplied, for the purposes of design and printing. You agree to indemnify and hold Primal Wear harmless from any third party claims relating to the alphanumeric or graphic elements you have supplied to Primal Wear. © 2014 Primal Wear, Inc.



- To ensure the highest printed quality, provide artwork in vector form.
- All text must be outlined.
- Artwork cannot cross seams/panels.
- Provide pantone colors if possible. You may use as many as needed for your artwork.

PANTONE COLORS:



MASK Artwork must extend to this line.

Size Large

Safe Area If logos or essential art extend past the red line they may be cutoff on smaller sizes.